



Introduction to the partnership, timeline and process

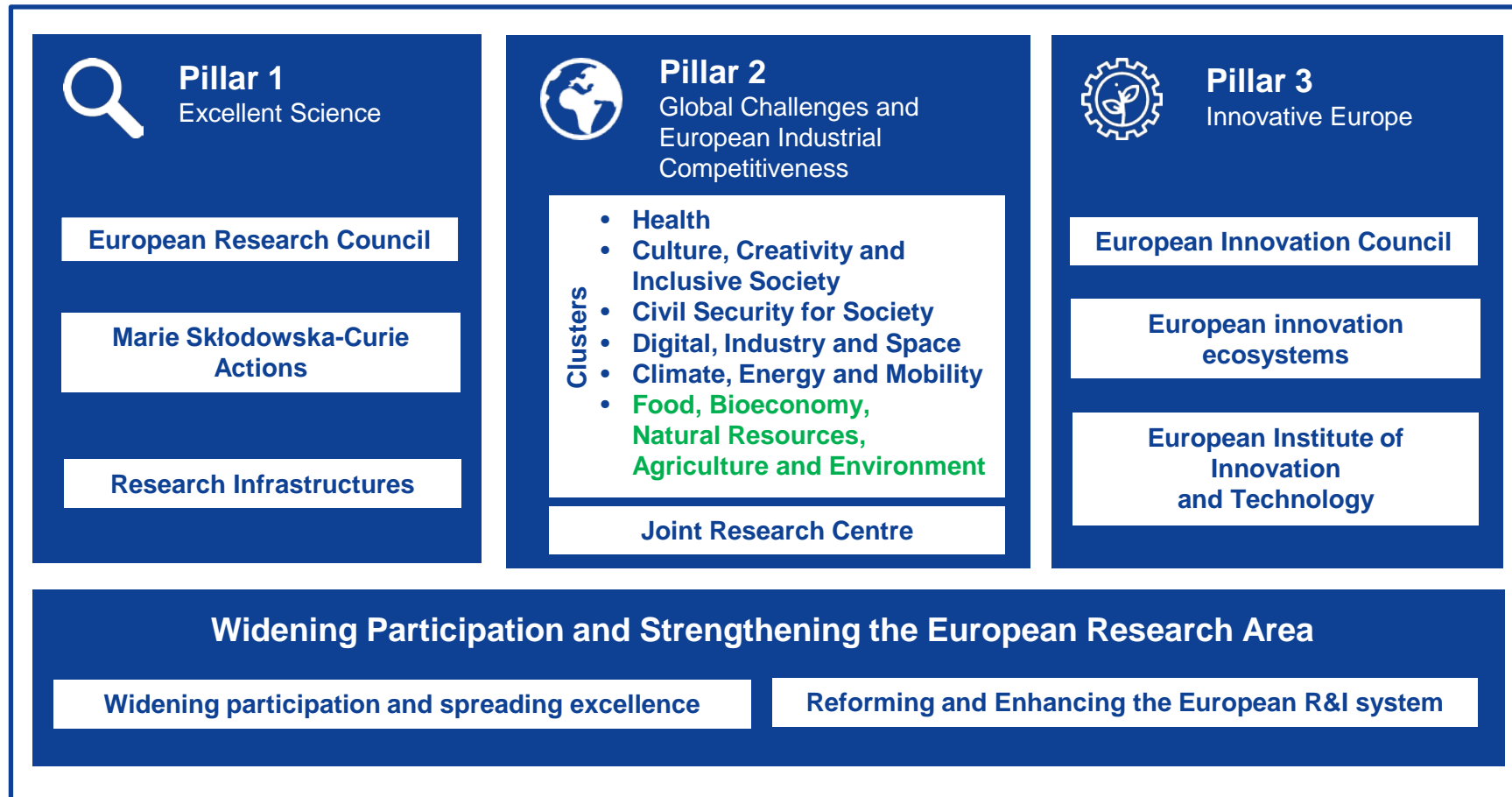
Susana Gaona

Research Programme Officer, DG AGRI

Workshop to launch the process to develop the SRIA

29/04/2022

Horizon Europe (2021 – 2027)



New approach to European R&I Partnerships

- Partnerships **pool resources** of a wide range of public and/or private partners and **overcome fragmentation of research efforts**.
- Introduced already in 2002, but **new approach under Horizon Europe**:
 - ⇒ more strategic, more coherent, more impact-driven
- **Three forms of implementation** (co-fund, co-programmed, institutional)

Partnerships in Cluster 6 (2021-2024)

Agriculture, Forestry
and Rural Areas



**Accelerating farming systems
transition: agroecology living
labs and research
infrastructures**

Agriculture of data



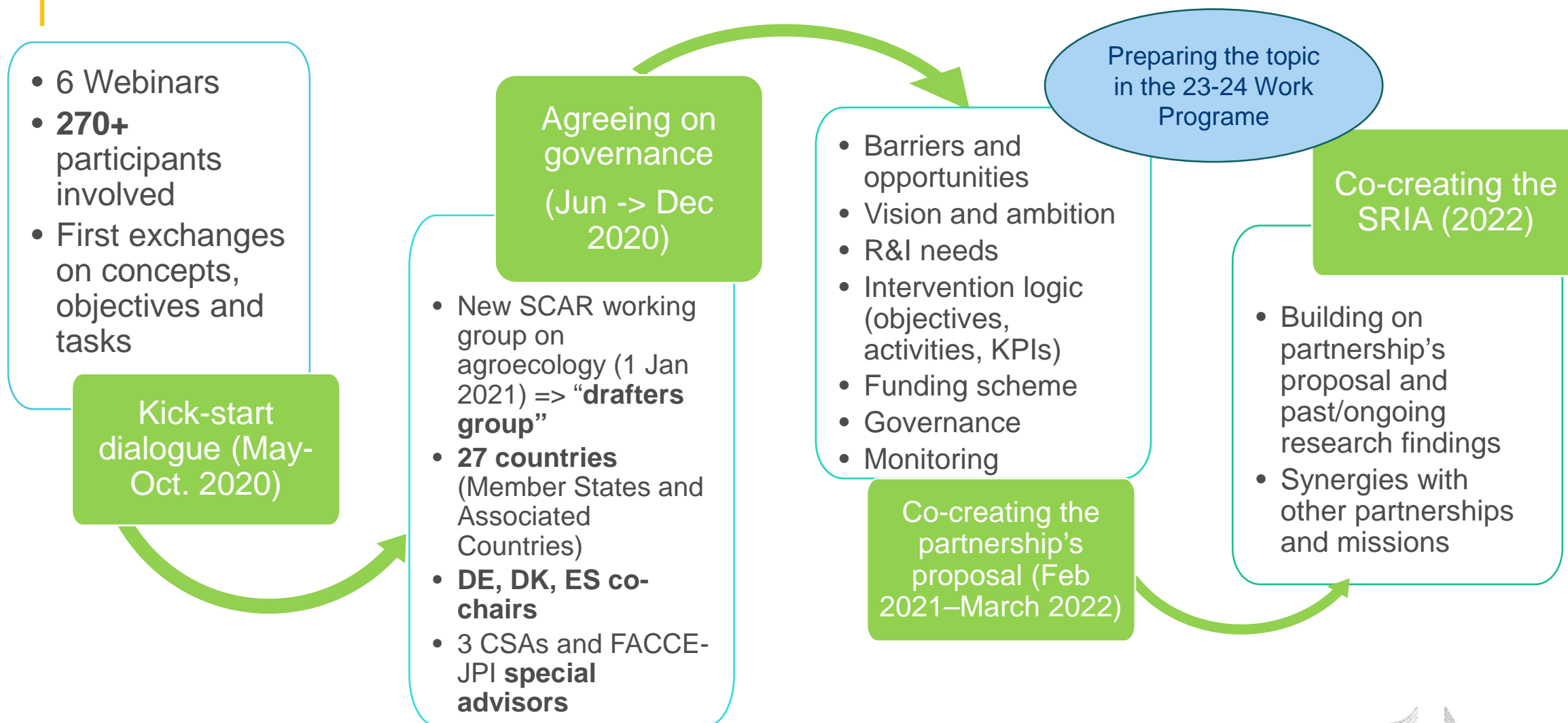
Animals health & welfare

**Others related to biodiversity, Blue Economy,
food systems, circular bio-based sector, water**



100%
biobased

The process



Timeline (tentative)

Partnership proposal

Draft 16/12/2021 → RTD review

“Fine-tuning” → end March 2022

Letters to MS/AC for commitments → **end-March 2022** (signatures by **30 April**)

SRIA

First draft → **spring 2022**

Broad consultations (6 months)

Final draft by end 2022

Horizon Europe Work programme (tentative)

Ready by mid 2022

Publication T4 2022 – T1 2023

Thank you for your attention

SCAR-EUROPE.ORG

More
information

SCAR
Standing Committee
on Agricultural Research

